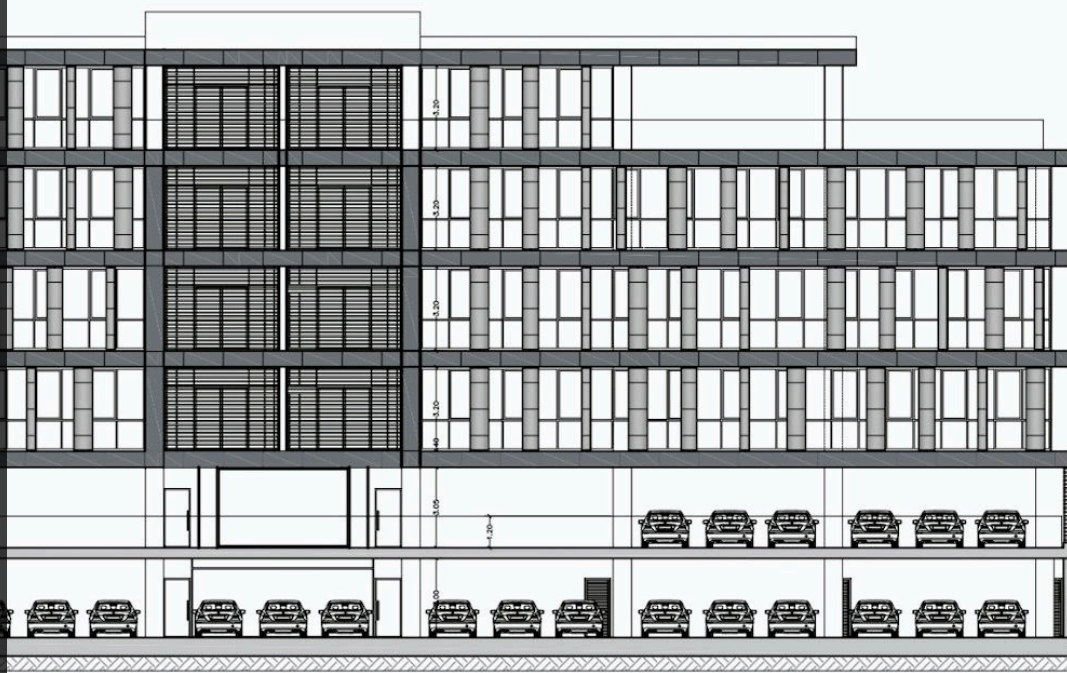


Commercial
Building in Pano
Polemida

FOR SALE

Limassol, Pano
Polemida



PRICE: €15,000,000

Reference 4376

Overview

Floors: 4

Parking spaces: 107

Basement: Yes

Status: Off plan

Structure: Concrete

Covered: 3645m²

Plot: 3327m²

Covered veranda:
439m²

About the Property

-Situated on the main road to Troodos mountains in Pano Polemida.

-This commercial project offers a wide open plan layout for any big company.

-The Floor plan consists of 2 offices per floor.

-Parking for +100 cars.

-Huge landscape garden for the employees

-Ideal for big company.



Facilities

Parking, Underground

Elevator

Gym